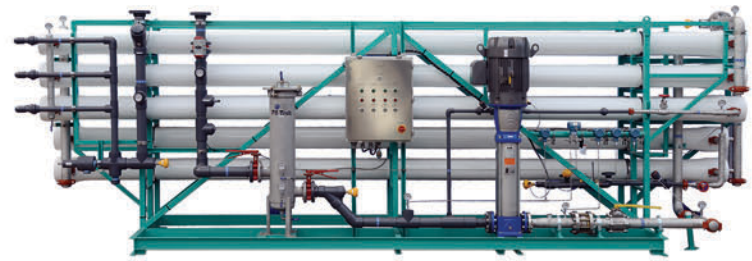




PURETEC[®]
Industrial Water

REVERSE OSMOSIS SYSTEMS

Puretec offers a wide selection of single & double pass high recovery configurations with capacities up to 1000 GPM. These rugged units are designed to provide years of reliable service even in the most demanding applications and environments. Puretec's broad range of engineering and manufacturing experience can provide a Reverse Osmosis system that will meet any specification.

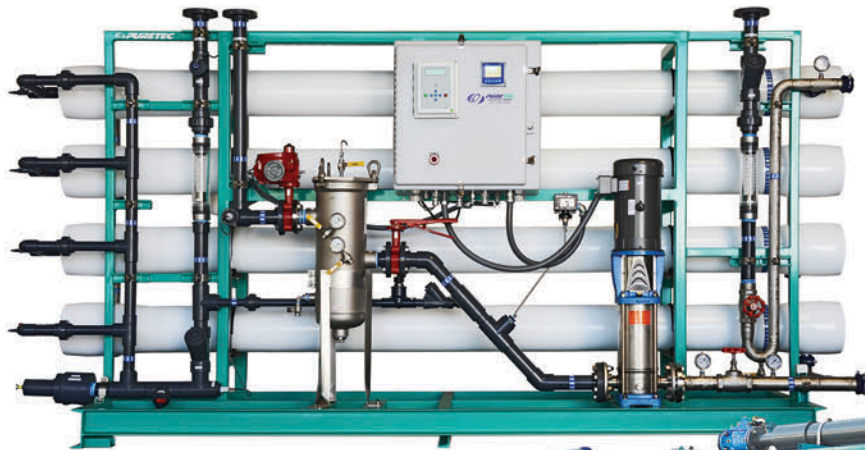


Standard Features

- ☑ Powder coated, welded structural steel frame
- ☑ Premium, efficient, multistage, stainless steel, vertical pumps
- ☑ 316 stainless, multi-element cartridge filter housings
- ☑ 316 stainless steel, sch 10, welded, electro polished high pressure piping
- ☑ Piping materials available includes: Sch 80 PVC/CPVC, socket welded polypropylene, PVDF, sanitary stainless steel, and orbital welded stainless steel
- ☑ Brand name spiral wound reverse osmosis membranes selected to provide optimum rejection, productivity and durability

Full instrumentation panels are available with Microprocessor, PLC, HMI, UL508, with remote monitoring options available.

24-hour emergency service, maintenance agreements, build own operate systems, and financing options are available.



Call us today!
(800) 906 6060

✉ sales@puretecwater.com 🌐 www.PuretecWater.com